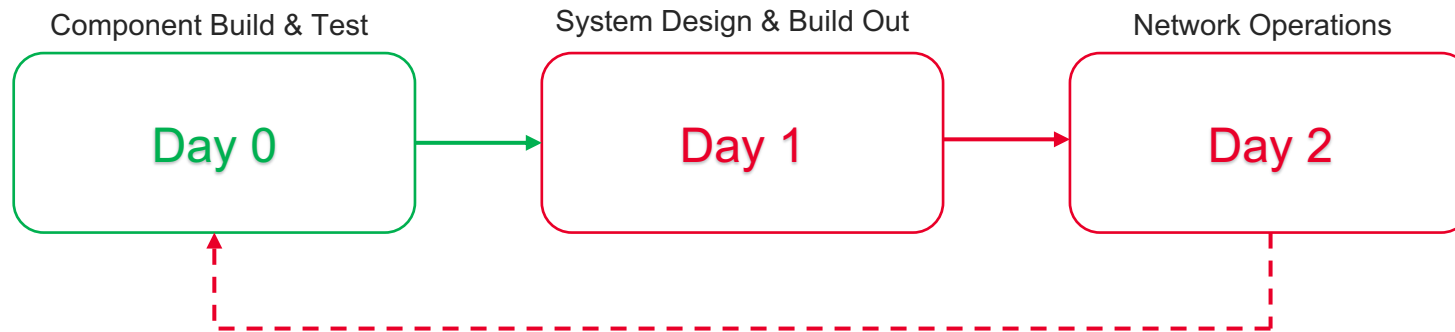


# Programmable Test Infrastructure for Programmable Infrastructure

Ankur Sheth  
16 March 2022

# Network Test So Far

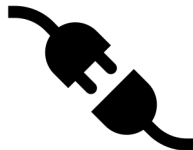
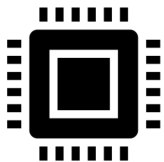
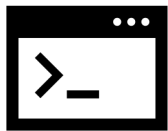
- Lab Test
- Isolated Box



- Left Unsaid
  - Test Infra NOT Our Problem
  - Operations NOT Our Problem



# Test Infrastructure Matters!



*Test Infrastructure is AS Important as  
Tests, Test Tools!*

# Keysight in Ecosystems



OPI

DASH



KNE

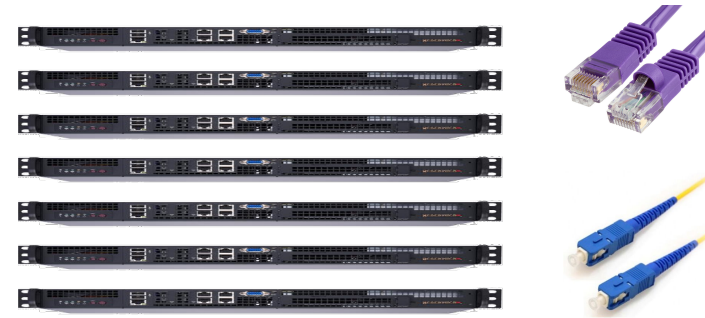
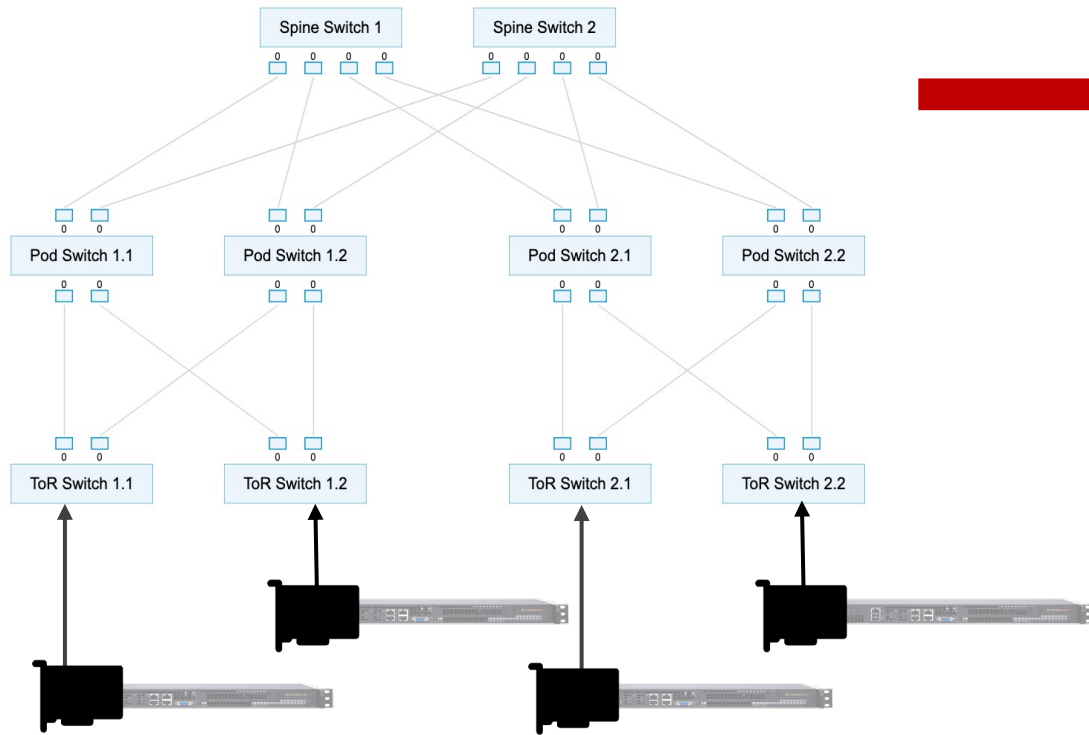


CONTAINERlab

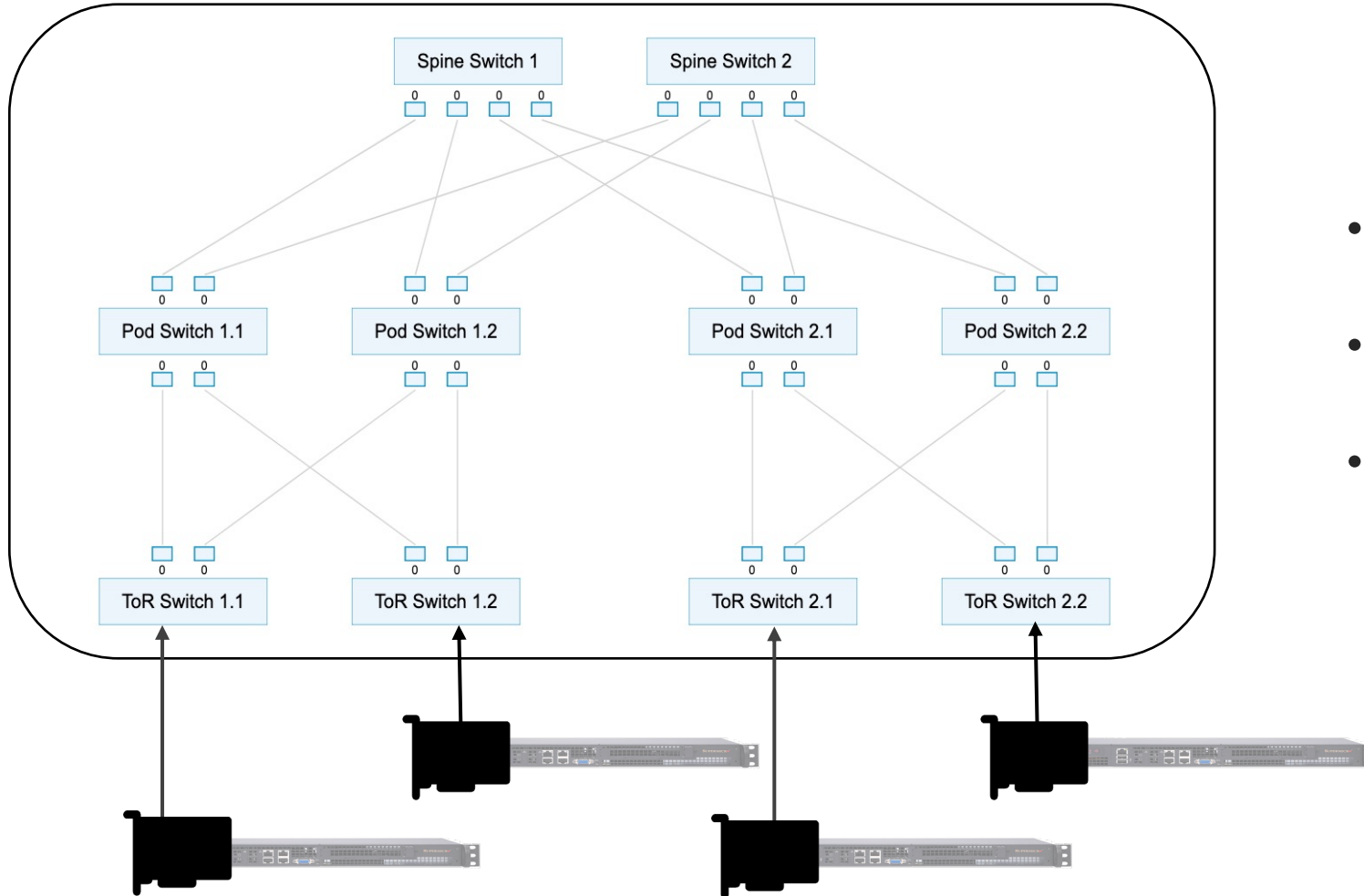


- Innovation Thru Ecosystems
- Ecosystems are Unique

# Smart NIC System Test Setup

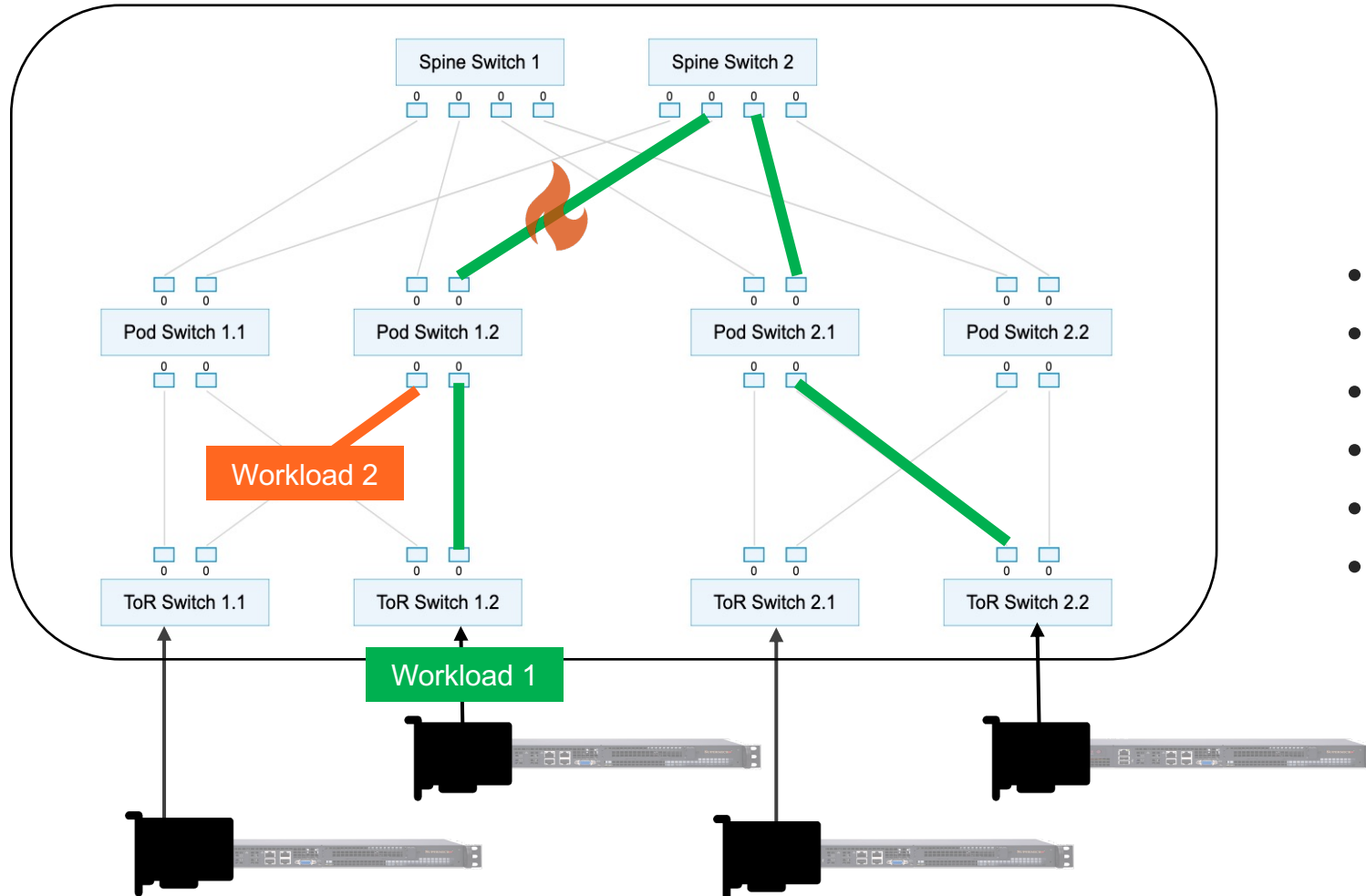


# Data Center In A Box



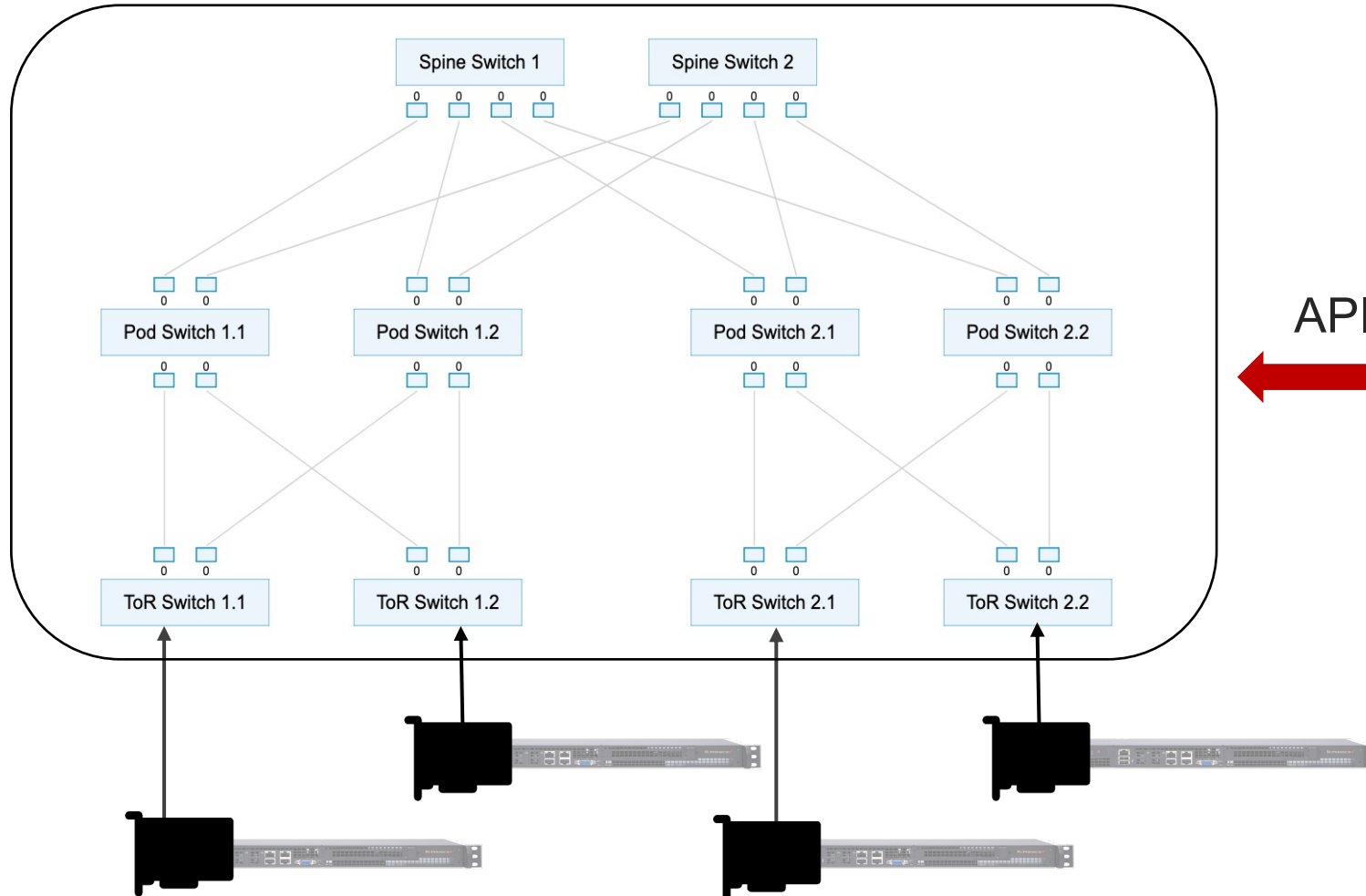
- Off the Shelf Switch
- Real Behavior
- Goodbye
  - Re-cabling
  - Maintenance

# Data Center In A Box



- Additional Traffic
- Link Failures
- Congestion
- Packet Loss
- ECMP, QoS
- ...

# Data Center In A Box



- Open
- Model Driven
- Vendor Agnostic

<https://github.com/open-network-experiments>



## Collaborate With Us!

- Open Network Experiments – ONEx
  - <https://github.com/open-network-experiments>
- Open Traffic Generator - OTG
  - <https://github.com/open-traffic-generator>

*We also make traffic generators!*